



Place an Image in Text in Photoshop

In this **Adobe Photoshop tutorial**, we're going to learn how to place an **image in text**, a very popular thing to do in Photoshop, and also useful when creating a header for a web site. Your final image should be between 600 and 900 pixels. Here's the effect we're going for, **but your image should have your first and last name.**



Procedure

Step 1: Open A Photo To Place Inside Your Text

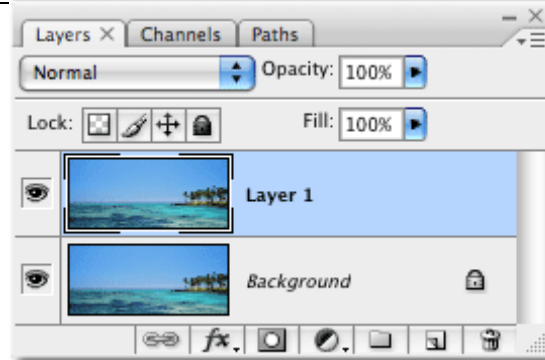
First, we need the image that we're going to place inside of our text. I'll use this panoramic photo of Hawaii:

Images



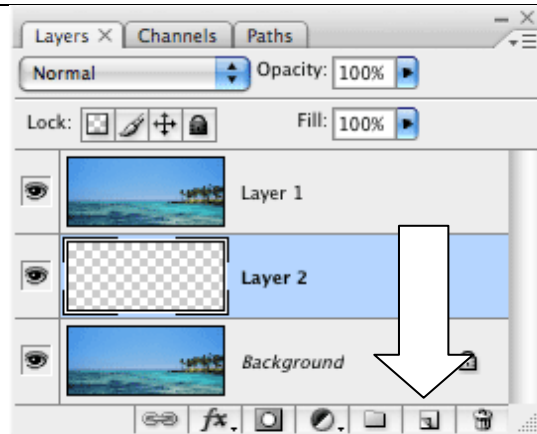
Step 2: Duplicate The Background Layer

If we look in the Layers palette, we can see that we currently have one layer, named *Background*. This layer contains our image. Right-click the layer and choose Duplicate. If we look once again in the Layers palette, we see that we now have two layers. The original Background layer is on the bottom, and a copy of the Background layer, which Photoshop automatically named "Layer 1", is sitting above it:



Step 3: Add A New Blank Layer Between The Two Layers

Next, we need to add a new blank layer between the Background layer and "Layer 1". Use the new layer button to add a new layer to your palette. Drag the new layer below Layer 1 like in the image to the right.

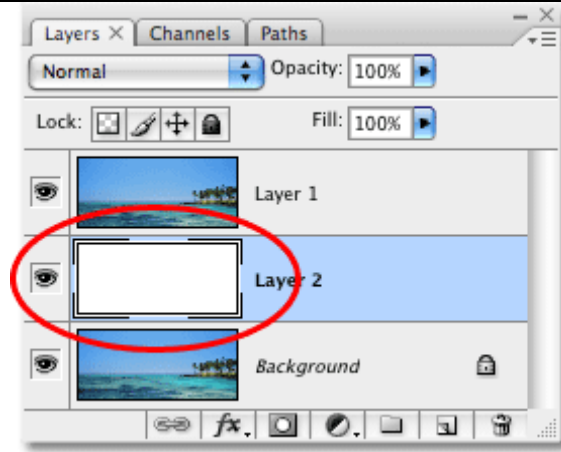


Procedure

Step 4: Fill The New Layer With White

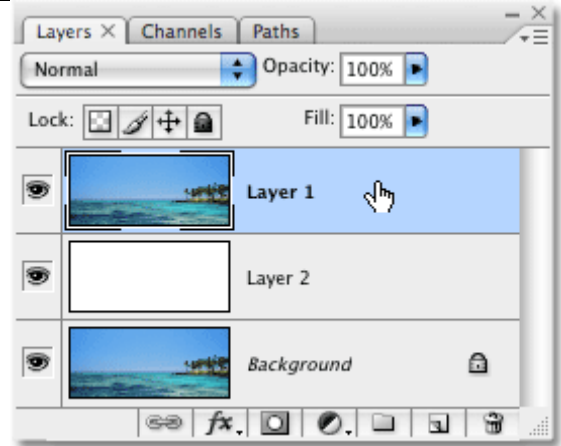
Use the fill bucket to add white to the layer. Nothing will appear to have happened in the document window, since the image on "Layer 1" is blocking "Layer 2" from view, but if we look at the layer preview thumbnail for "Layer 2" in the Layers palette, we can see that sure enough, the layer is now filled with solid white:

Images



Step 5: Select "Layer 1" In The Layers Palette

It's time to add our text, but in order to see the text when we add it, we'll need to have the text appear above "Layer 1", otherwise the image on "Layer 1" will block the text from view. To make sure we can see our text, click on "Layer 1" in the Layers palette to select it. This way, as soon as we begin typing, Photoshop will create a new type layer for us and place the type layer directly above "Layer 1":



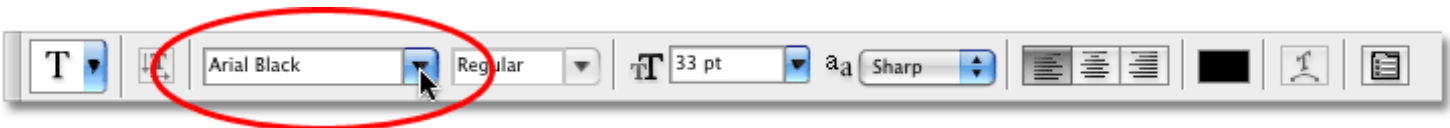
Step 6: Select The Type Tool

To add the text, we'll need Photoshop's **Type Tool**, so select the Type Tool from the Tools palette.

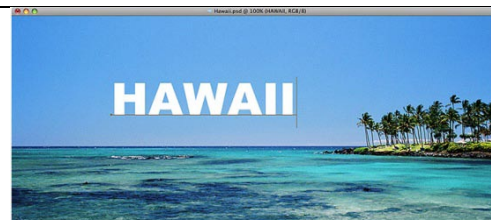


Step 7: Choose A Font In The Options Bar

With the Type Tool selected, go up to the **Options Bar** at the top of the screen and choose whichever font you want to use for the effect. Generally, fonts with thick letters work best. I'm going to choose Arial Black. Don't worry about the font size for now:



Step 8: Add Your Text With the Type Tool selected, your font chosen and white as your Foreground color, click inside your document window and add your text. ****Write your first and last name as the text.****



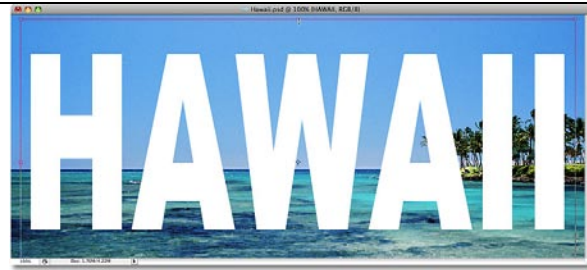
Procedure

Step 9: Resize and Reposition The Text With The Free Transform Command

You'll probably need to resize and reposition your text at this point, and we can do both of those things using Photoshop's **Free Transform** command. Press **Ctrl+T** on your keyboard to bring up the Free Transform box and handles around your text, then drag any of the handles to resize the text

****Press Enter** when you're done to accept the transformation and exit out of the Free Transform command.**

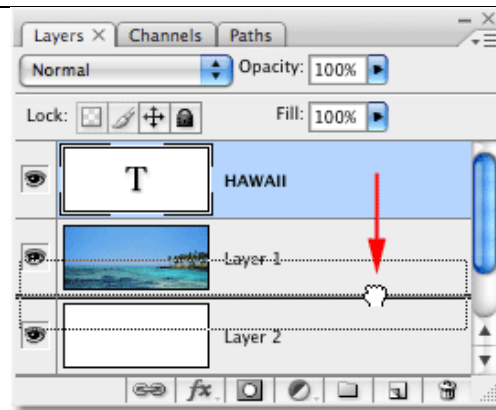
Images



Step 11: Drag The Text Layer Below "Layer 1"

Now that we have our text the way we want it, we need to move the type layer below the text in the Layers palette. Click on the text layer, then simply drag it down below "Layer 1". You'll see a thick black line appear between "Layer 1" and "Layer 2":

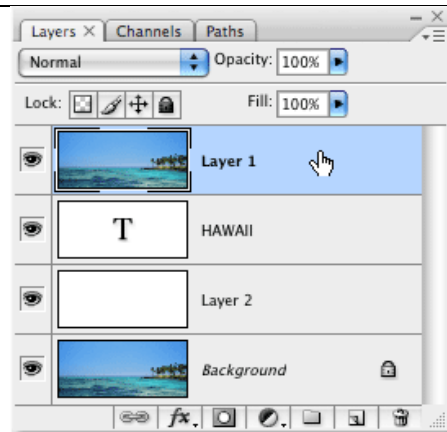
Release your mouse button when the black line appears to drop the type layer into place between "Layer 1" and "Layer 2":



Step 12: Select "Layer 1" Again

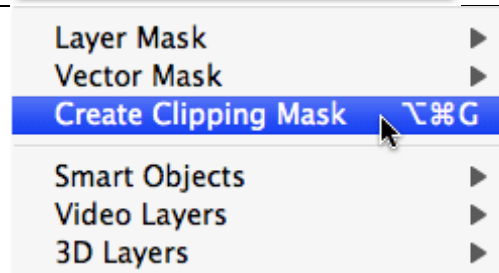
Click once again on "Layer 1" in the Layers palette to select it:

The text will temporarily disappear inside the document window now that the image on "Layer 1" is blocking it from view.



Step 13: Create a Clipping Mask

To create the illusion that the photo is inside the text, we need to use a **clipping mask**. This will "clip" the photo on "Layer 1" to the text on the layer directly below it. Any areas of the photo that appear directly above the letters will remain visible in the document.

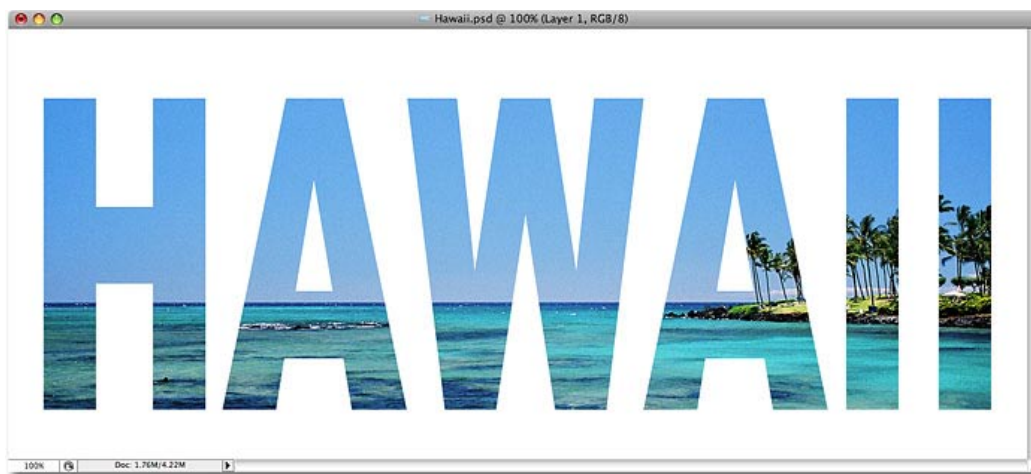


Procedure

The rest of the photo will disappear from view.

With "Layer 1" selected in the Layers palette, go up to the **Layer** menu at the top of the screen and choose **Create Clipping Mask**:

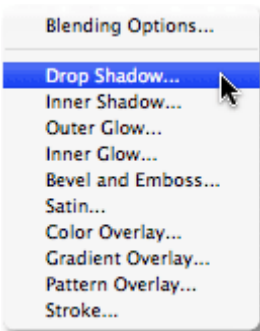
If we look in the document window, we can see that the photo now appears to be inside the text:



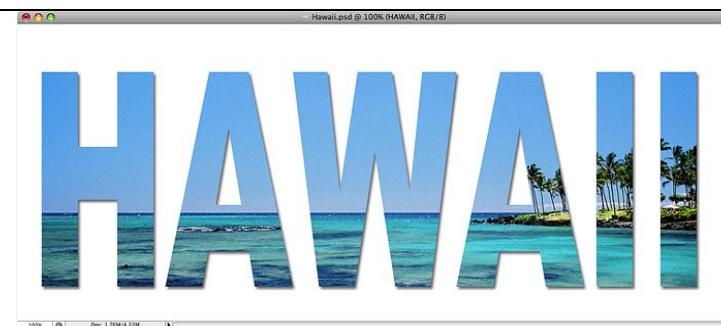
Images

Step 14: Add A Drop Shadow

To complete my effect, I'm going to add a drop shadow to the letters. If you want to follow along, first select the type layer in the Layers palette, then click on Layer then **Layer Styles** icon. Select **Drop Shadow** from the list of layer styles that appears:



This brings up Photoshop's **Layer Style** dialog box set to the **Drop Shadow** options in the middle column. Choose the options you think look well.
****Submit your assignment at ustudy.org, call your file 4name_header.jpg.**



Assignment 2: Create another header like this one but create it for your next web site. You will be creating a 4 page site of your choice. Choose a topic, find a picture that is 600-900 pixels and create a header with the name of your site in it. You will use this header on all 4 pages of the new site you are starting.